

Ecosoft ECONNECT IoTIZR

Ideal All-in-One Package for Internet Connected Water Treatment System



Contents

| | | |
|-----------|--|-----------|
| 1 | What is ECONNECT IoTIZR? | 3 |
| 2 | ECONNECT Dashboard | 5 |
| 3 | Dashboard & Mobile Applications | 7 |
| 4 | Specifications | 8 |
| 5 | Connectivity Status | 8 |
| 6 | ECONNECT access | 9 |
| 7 | Example of Installation | 9 |
| 8 | Safety Precautions | 9 |
| 9 | Warning | 9 |
| 10 | Caution | 11 |
| 11 | Usage notes | 11 |

1 What is ECONNECT IoTIZR?

ECONNECT IoTIZR by Ecosoft is all-in-one package for Internet connected water treatment systems.

It consists of 2 components:

- ECONNECT IoTIZR — BLE & Wi-Fi Transmitter equipped with water flow & TDS sensors
- ECONNECT Cloud — service collecting water usage & water quality data and representing it via web dashboard & mobile applications



IoTIZR BLE & Wi-Fi Transmitter with water flow & TDS sensors

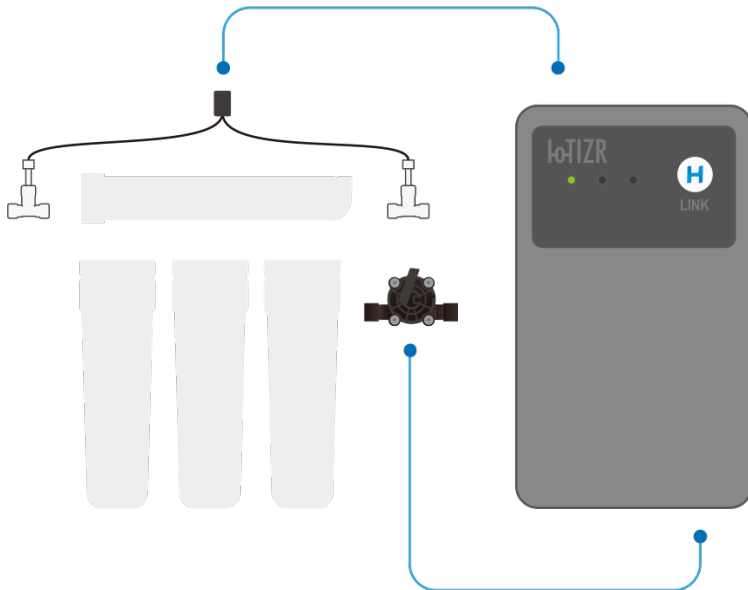
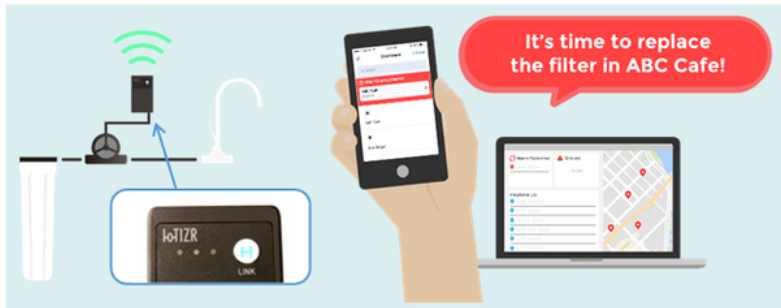


Web Dashboard & Mobile App

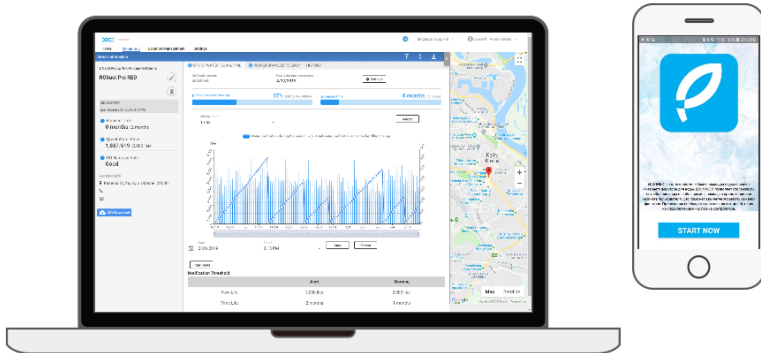
ECONNECT IoTIZR uses Wi-Fi connection at home or in café or restaurant to transmit water usage & water quality data from flow sensor & TDS probes to ECONNECT cloud.

Data could be accessed through web-based dashboard or mobile applications.

Filters' & RO membrane lifetime are controlled and date of next replacement is predicted.



ECONNECT IoTZR installed on water filter: TDS probes connected to inlet & purified water and flow sensor measures volume of purified water.

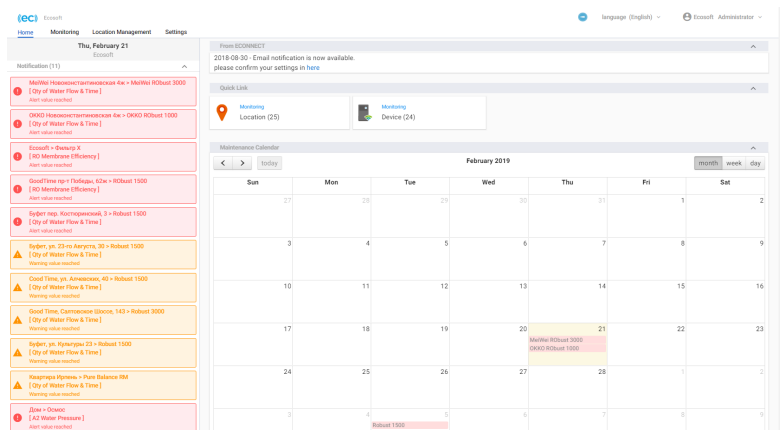


Data could be accessed through web-based dashboard with role management & access control system or via mobile application.

2 ECONNECT Dashboard

ECONNECT Dashboard collects & represents all data from IoTZR equipped devices.

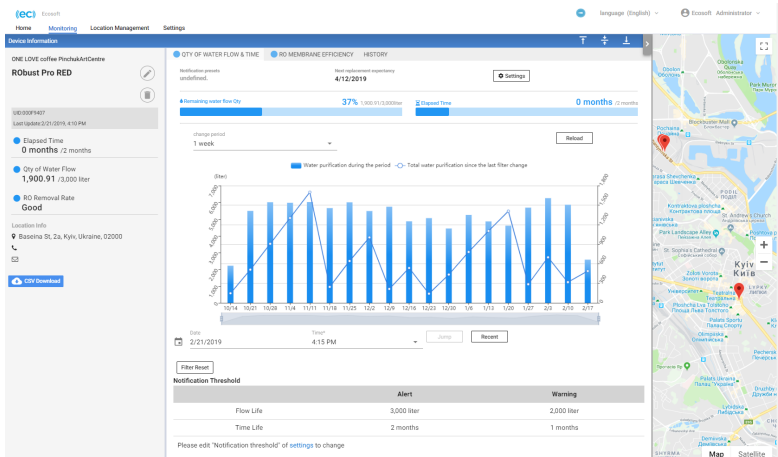
Its feature-rich role management & access control system allows for flexible control of access of managers, users and service engineers.



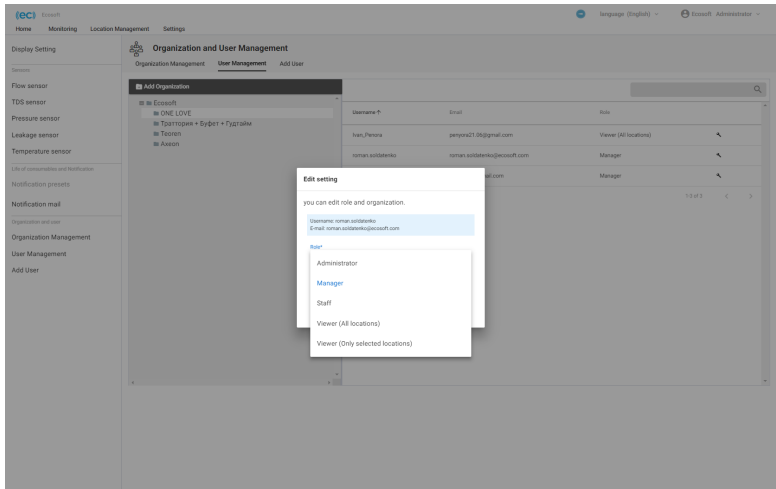
Dashboard main page shows filters replacement alerts and notifications & date predictions for filters replacements

| Status | Map | Location name | Organization | Service | Device |
|--------|-----|-----------------------------------|----------------------------|------------------------------|--------|
| ● | | MeWe Новокиївська вул. 4к | Ecosoft | WaterFlow&Time | 1 |
| ● | | ОККО Новокиївська вул. 4к | Ecosoft | WaterFlow&Time | 1 |
| ● | | Ecosoft | Ecosoft | WaterFlow&Time, RO | 1 |
| ● | | Тесты | Ecosoft | WaterFlow&Time, RO | 1 |
| ● | | Квартал Ірпень | Ecosoft | WaterFlow&Time, RO | 1 |
| ● | | Дом | Ecosoft | WaterFlow&Time, RO, Pressure | 1 |
| ● | | ONE LOVE coffee PivchuArtCentre | ONE LOVE | WaterFlow&Time, RO | 1 |
| ● | | Буфет Арт. Алешня, 19 | Тракторы + Буфет + Гузляны | WaterFlow&Time, RO | 1 |
| ● | | Буфет Московский пр-т, 256Б | Тракторы + Буфет + Гузляны | WaterFlow&Time, RO | 1 |
| ● | | GoodTime пр-т Победы, 62ж | Тракторы + Буфет + Гузляны | WaterFlow&Time, RO | 1 |
| ● | | Буфет ул. Валентинівська, 21 | Тракторы + Буфет + Гузляны | WaterFlow&Time, RO | 1 |
| ● | | Буфет ул. Полтавский Шлях, 126 | Тракторы + Буфет + Гузляны | WaterFlow&Time, RO | 1 |
| ● | | Буфет ул. Лебана Майд 24 | Тракторы + Буфет + Гузляны | WaterFlow&Time, RO | 1 |
| ● | | Буфет пер. Коспоринский, 3 | Тракторы + Буфет + Гузляны | WaterFlow&Time, RO | 2 |
| ● | | Буфет ул. Купцовой 23 | Тракторы + Буфет + Гузляны | WaterFlow&Time, RO | 1 |
| ● | | Буфет ул. Чкалова 2д | Тракторы + Буфет + Гузляны | WaterFlow&Time, RO | 1 |
| ● | | Good Time, Сапорожское шоссе, 143 | Тракторы + Буфет + Гузляны | WaterFlow&Time, RO | 1 |
| ● | | Good Time, ул. Проскувы, 5 | Тракторы + Буфет + Гузляны | WaterFlow&Time, RO | 1 |
| ● | | Буфет ул. 23-го Августа, 30 | Тракторы + Буфет + Гузляны | WaterFlow&Time, RO | 1 |
| ● | | Good Time, ул. Алчевский, 40 | Тракторы + Буфет + Гузляны | WaterFlow&Time, RO | 1 |

Location list shows all locations visible for a current user & actual state of filter at each location



Device information is shown with all water usage & filter replacement history data. Alert & notification thresholds could be set for water volume & lifetime of filters



User management allows creating different types of users with flexible access politics

3 Dashboard & Mobile Applications

<https://connect.ecosoft.com/dashboard/>

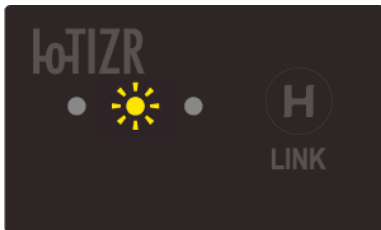


4 Specifications

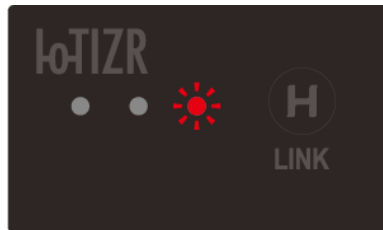
| | |
|------------------------------------|---|
| Connections | Ports: 1 flow sensor port and 3 sensor ports LED: three LEDs Button: one button |
| Power supply | micro USB B (Receptacle) 500 mA or above |
| Size, mm ($L \times W \times H$) | 85 × 50 × 15 (typical) |
| Weight, g | 45 (typical) |
| Ambient temperature, °C | -20..75 |
| Relative humidity, % | ≤ 90 |
| Waterproof | — |
| Fireproof level | UL94V-0 |

5 Connectivity Status

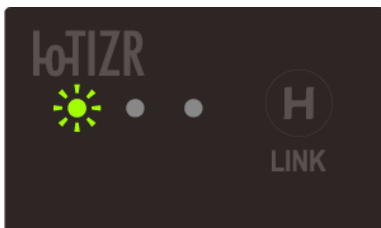
ECONNECT IoTIZR has LED indicators to show the connectivity status.



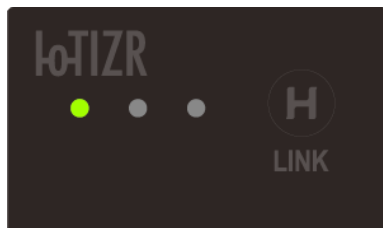
Blinking Yellow: Data Transmission



Blinking Red: No Setup/Lost Connection



Blinking Green: Setup Mode



Solid Green: Connected

6 ECONNECT access

In order to obtain invitation to ECONNECT access please send an e-mail to app.support@ecosoft.com with e-mail topic “*ECONNECT Access Request*” and provide essential information:

1. company name — required for creation of company profile in ECONNECT
2. preferred login (or first part of e-mail address will be used)

After that access will be given via invitation e-mail sent to the sender’s e-mail address.

7 Example of Installation

ECONNECT IoTZR could be installed on any filter regarding existing flow sensor sizes ($\frac{1}{4}$ ” or $\frac{3}{8}$ ” BSP male thread) and measuring ranges (0, 2 – 5 or 0, 8 – 15 L/min).

TDS probes should be installed where is it convenient to measure quality of inlet water (e. g. before the RO membrane element) and purified water. TDS probes are installed in $\frac{1}{4}$ ” push-fit fitting (e. g. $\frac{1}{4}$ ” tee).

Flow sensor should be installed on a straight pathway of purified water where only one-way water flow is possible — for example, installation right before the membrane tank is not allowed.

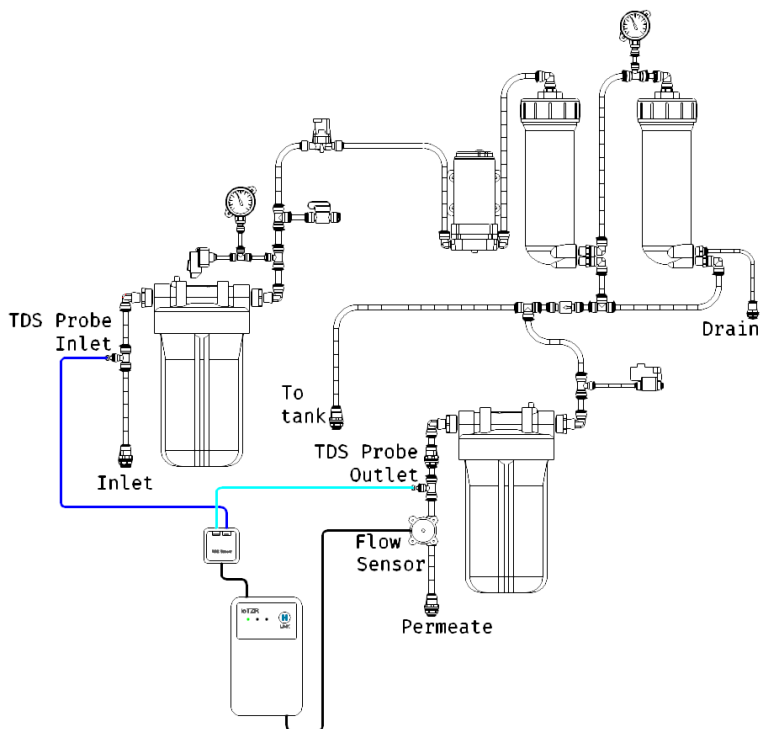
As an example installation of IoTZR on Ecosoft ROust 3000 RO system is shown below.

8 Safety Precautions

Since products are made very precisely, please be careful when handling. Before using this product, please read this “Safety Precautions” carefully and use it properly. This document indicates items you need to follow in order to prevent harm to you or other people and damage to property and to use this product safely.

9 Warning

If it is handled incorrectly, it indicates “The possibility of death or serious injury being assumed”.



Example of IoTZR installation on Ecosoft ROust 3000 RO system

- Discontinue use immediately when abnormality such as smoke, unusual smell, fever etc. occurs during use. It may cause electric shock or fire.
- Do not disassemble, remodel, or repair by customer. It may cause electric shock, fire or malfunction.
- Do not throw in a fire or heat it. It may cause fire or malfunction.
- Do not leave it in a place where it gets hot (direct sunlight, near a heater). It may cause fire, fire or malfunction.
- Do not leave it in humid or dusty places, places exposed to oil smoke or steam. It may cause electric shock, fire or malfunction.
- Do not throw in water or get wet. Also, do not touch this product

with wet hands. It may cause electric shock, fire, or malfunction.

- Do not insert foreign objects inside this product. It may cause electric shock, fire, or malfunction.
- Do not place this product within reach of infants and pets.
- Insert the cables surely into the connector until they are fully inserted. It may cause electric shock, fire or malfunction.
- Do not insert cables into the connector with excessive force. It may cause electric shock, fire, malfunction.
- Do not use deformed cables. It may cause electric shock, fire, malfunction due to short circuit due to breakage of the connector or disconnection of the cable.
- If you notice that the product is broken (cracked, broken, etc.), stop using it. It may cause electric shock or fire.
- When installing this product, secure it firmly. Failure to do so may result in injury due to falling etc.
- When installing this product, periodically inspect the mounting part. As time goes by, please check if there is no rattling in the installation of the product. Failure to do so may cause injury due to falling etc.

10 Caution

In the event of incorrect handling, it indicates the contents of "It is assumed that possibility of injury or physical damage may be assumed". Do not throw, drop, give a strong shock, or put heavy things on top. It may cause a malfunction.

11 Usage notes

This product is intended for use in general restaurants or homes. We do not assume any responsibility in the event of damage caused by use other than those described in this manual and instruction manual.

- Do not use under direct or indirect system related to medical equipment or human life, in an environment requiring high safety and reliability.
- Do not use in systems that directly or indirectly involve equipment or computer systems that require high safety or reliability.

For Notes